



Residential Concepts Portfolio One



A Philosophy of Design for an Estate Residence.

During fifty (50) years of domestic and international design experience certain aspects defined and created parameters for creating a residential luxury estate. Based on this knowledge, I formulated a philosophy of design and translated this into a method to design luxury homes focused on exceeding a client's expectations.

- ❖ Identify detailed client needs and expectations for personalized creation.
- ❖ Provide full service of architecture, engineering, site, interiors, construction, FF&E purchasing, and project management rather than selling plans.
- ❖ Provide designs of contemporary 25th century concepts rather than traditional or period styles mausoleums.
- ❖ Provide full smart home operation with full solar power off the grid capabilities.
- ❖ Utilize advanced methods of construction and design to enable lower costs, faster completion, and lower maintenance costs through greater durability.



EagleWing



Eagle Wing 14,000 square feet

- ❖ A one-story contemporary estate residence with master suite and 4 bedroom/bath suites; entertainment great room (banquet dining for 28 -32, bar with wine storage); large screen home theater with surround sound; gym; chief commercial kitchen; laundry; 4 car garage; and game or martial arts space.
- ❖ Fully furnished with client approved contemporary and custom furniture and artwork.
- ❖ Baths with heated floors, Wi-Fi throughout, wood burning two-sided fireplace in great room and gas fired or wood burning fireplaces in all bedrooms.
- ❖ Master suite includes two offices and separate bath facilities.
- ❖ Amenities include heated indoor pool with spas and BBQ; doubles tennis court; outdoor fire pit; and optional 3-hole championship golf course with putting green.
- ❖ Closets are replaced with wardrobes.
- ❖ Solar field for full electric service and 24 hours power off grid capabilities.
- ❖ State of the art smart house
- ❖ Landscape architect designed gardens and landscaping
- ❖ Optional separate staff quarters.
- ❖ Fully customizable to fit clients needs and desires.

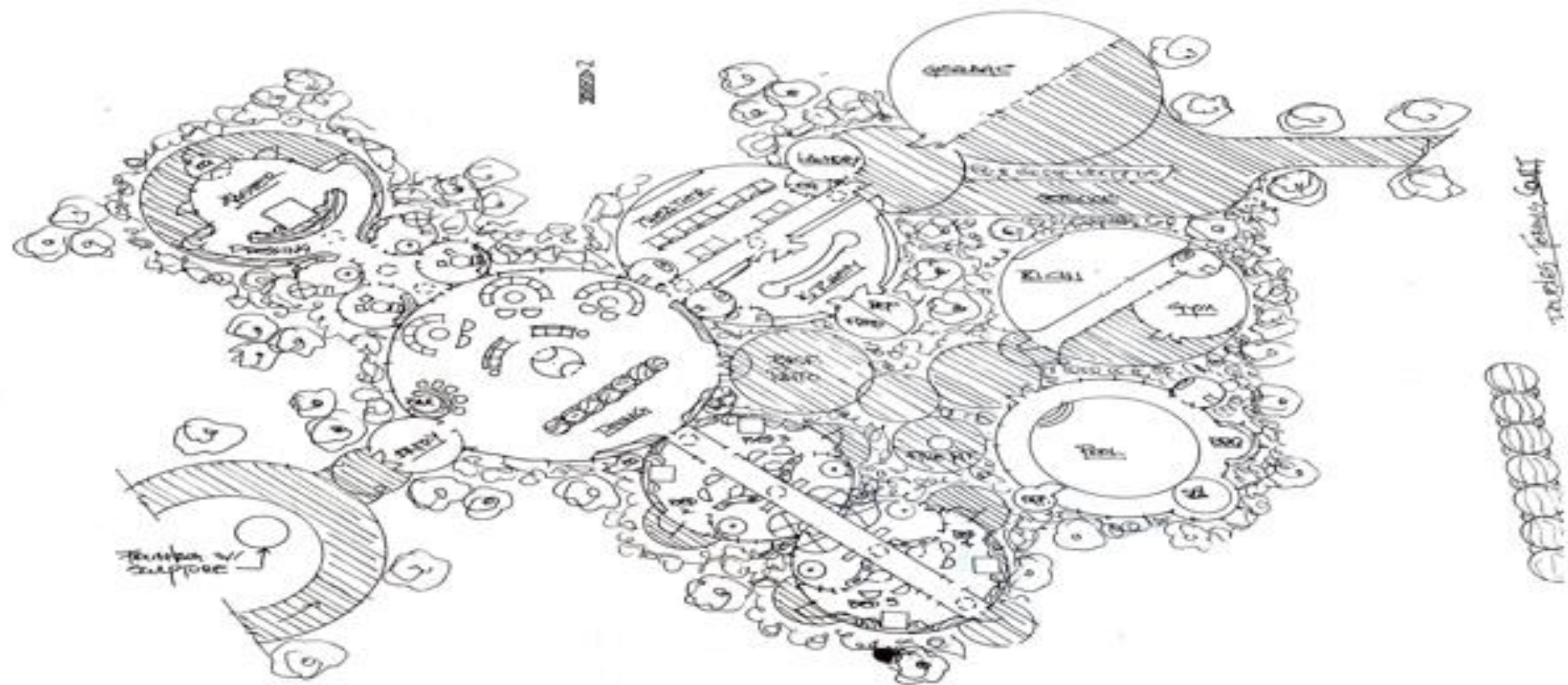
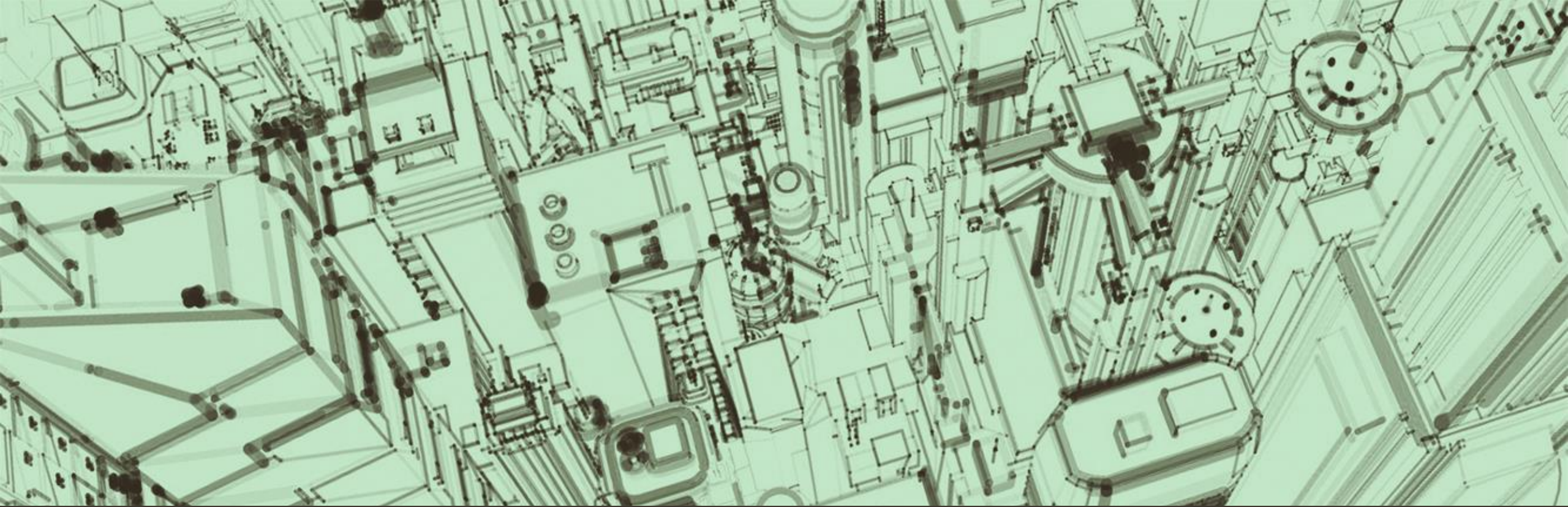


EXHIBIT VIKING
 Aug. 2024

14,000 SQ. FEET
 SCALE 1/16" = 1'-0"

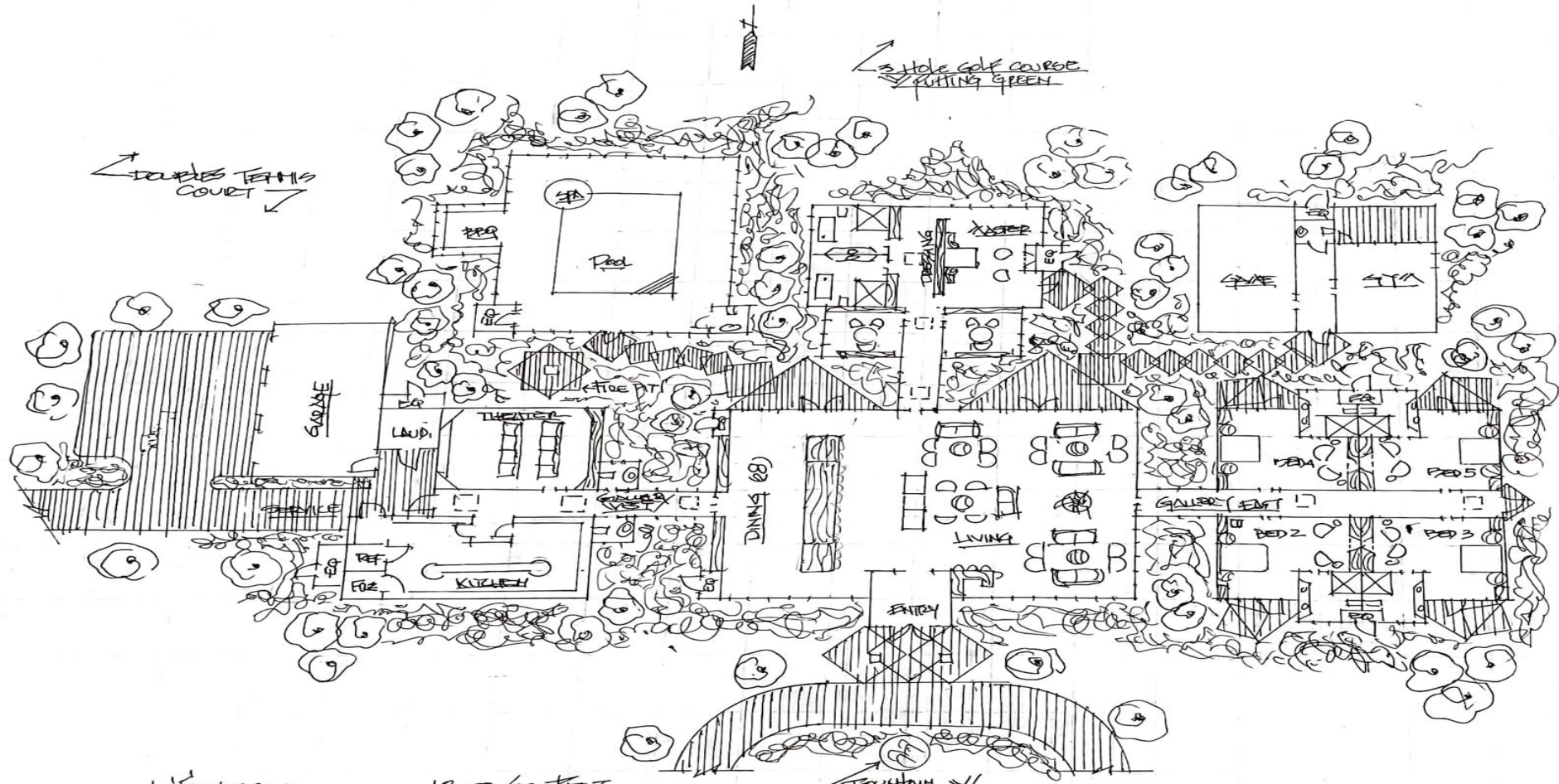


LeEouerr



“LEquerre” 18,000 square feet

- ❖ A one-story contemporary estate residence with master suite and 4 bedroom/baths suites; entertainment great room (banquet dining for 28 -32, bar with wine storage); large screen home theater with surround sound; gym; chief commercial kitchen; laundry; 3 car garage; and game room.
- ❖ Fully furnished with client approved contemporary and custom furniture and artwork.
- ❖ Baths with heated floors, Wi-Fi throughout, wood burning two-sided fireplace in great room and gas fired or wood burning fireplaces in all bedrooms.
- ❖ Master suite includes two offices and separate bath facilities.
- ❖ Amenities include heated indoor pool with spa and BBQ; doubles tennis court; outdoor fire pit; and 3-hole championship golf course with putting green.
- ❖ Closets are replaced with wardrobes.
- ❖ Solar field for full electric service and 24 hours power off grid capabilities.
- ❖ State of the art smart house
- ❖ Landscape architect designed gardens and landscaping
- ❖ Optional separate staff quarters.
- ❖ Fully customizable to fit clients needs and desires.



L'ÉTOILE 18000 SQ FEET
 SCALE 1/16" = 1'-0" APR 2024



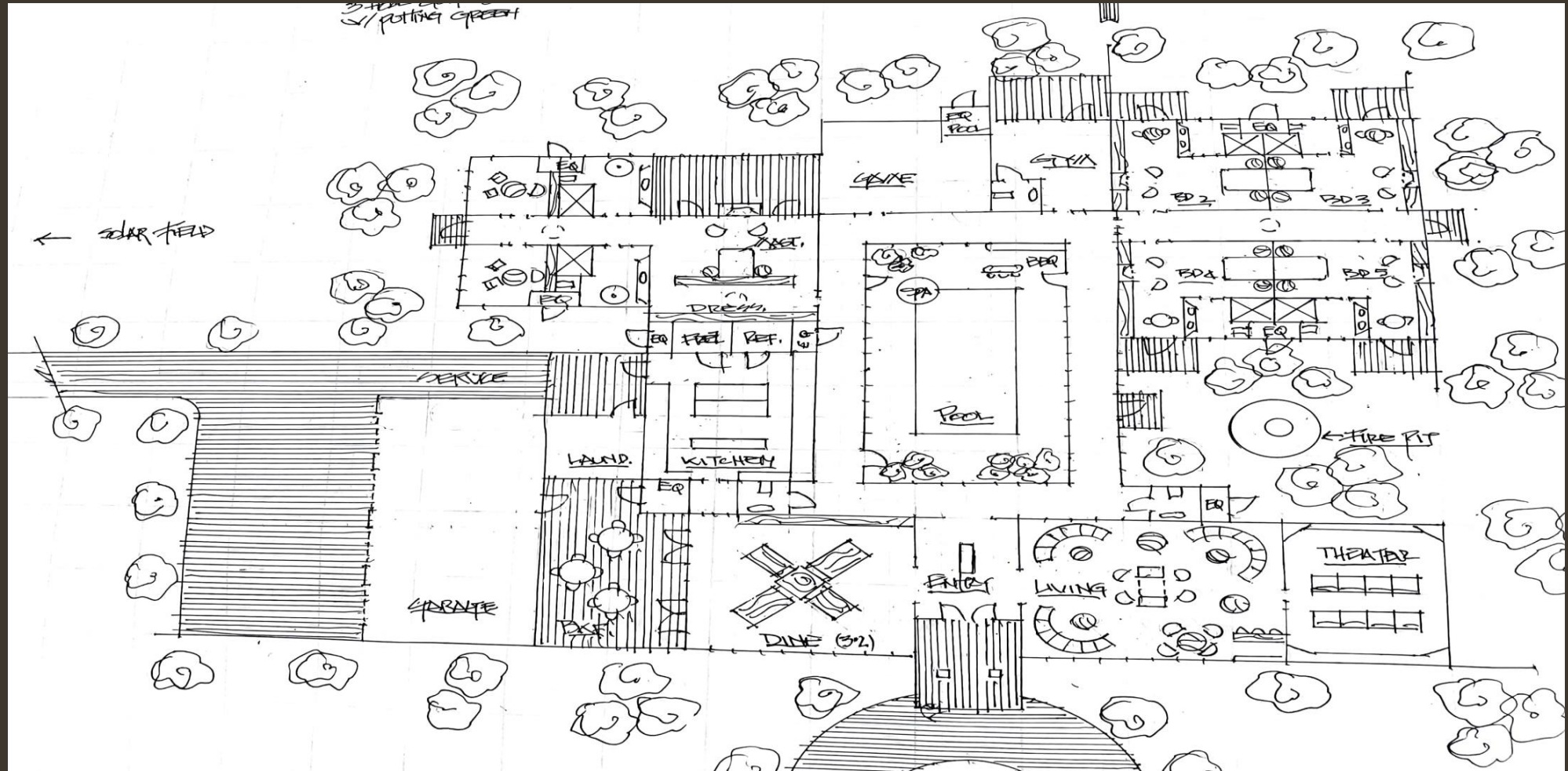
Atrium Maison



“Atrium Maison” 15,000 square feet

- ❖ A one-story contemporary estate residence with master suite and 4 bedroom/baths suites; entertainment great room (banquet dining for 32, bar with wine storage); large screen home theater with surround sound; gym; chief commercial kitchen; laundry; 4 car garage; and game room.
- ❖ Fully furnished with client approved contemporary and custom furniture and artwork.
- ❖ Baths with heated floors, Wi-Fi throughout, wood burning two-sided fireplace in great room and gas fired or wood burning fireplaces in all bedrooms.
- ❖ Master suite includes two offices and separate bath facilities.
- ❖ Amenities include heated indoor pool with spa and BBQ; doubles tennis court; outdoor fire pit; and 3-hole championship golf course with putting green.
- ❖ Closets are replaced with wardrobes.
- ❖ Solar field for full electric service and 24 hours power off grid capabilities.
- ❖ State of the art smart house
- ❖ Landscape architect designed gardens and landscaping
- ❖ Optional separate staff quarters.
- ❖ Fully customizable to fit clients needs and desires.

Le Atrium Maison





Cirque Celeste



Cirque Celeste 10,000 square feet

- ❖ A one-story contemporary estate residence with master suite and 4 bedroom/baths suites; entertainment great room (banquet dining for 32, bar with wine storage); large screen home theater with surround sound; gym; chief commercial kitchen; laundry; 4 car garage; and game room.
- ❖ Fully furnished with client approved contemporary and custom furniture and artwork.
- ❖ Baths with heated floors, Wi-Fi throughout, wood burning two-sided fireplace in great room and gas fired or wood burning fireplaces in all bedrooms.
- ❖ Master suite includes two offices and separate bath facilities.
- ❖ Amenities include heated indoor pool with spa and BBQ; doubles tennis court; outdoor fire pit; and 3-hole championship golf course with putting green.
- ❖ Closets are replaced with wardrobes.
- ❖ Solar field for full electric service and 24 hours power off grid capabilities.
- ❖ State of the art smart house
- ❖ Landscape architect designed gardens and landscaping
- ❖ Optional separate staff quarters.
- ❖ Fully customizable to fit clients needs and desires.



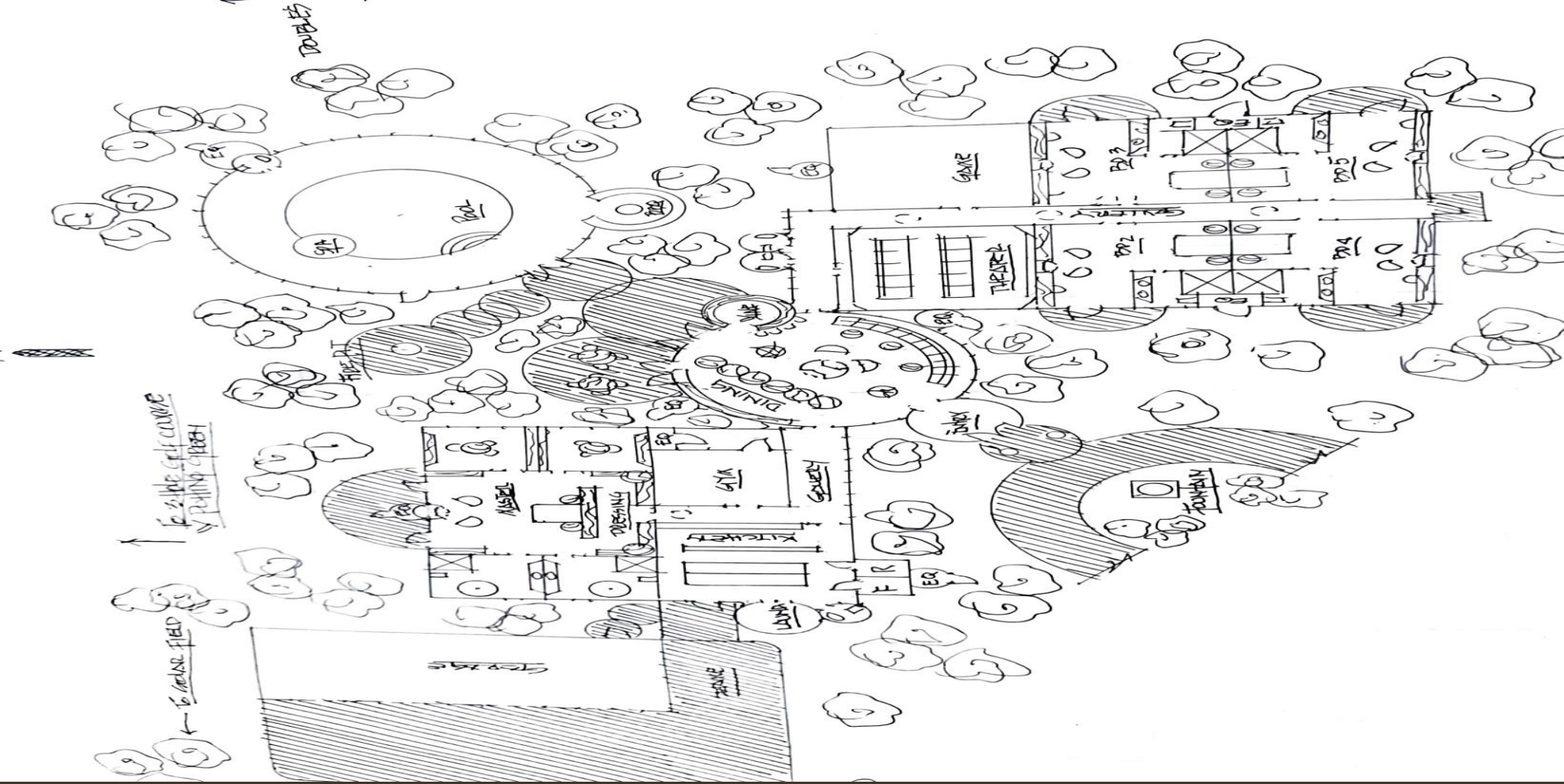
Maison Vino



Maison Vino square feet

- ❖ A one-story contemporary estate residence with master suite and 4 bedroom/baths suites; entertainment great room (banquet dining for 24-28, bar with wine storage); large screen home theater with surround sound; gym; chief commercial kitchen; laundry; 4 car garage; and game room.
- ❖ Fully furnished with client approved contemporary and custom furniture and artwork.
- ❖ Baths with heated floors, Wi-Fi throughout, wood burning two-sided fireplace in great room and gas fired or wood burning fireplaces in all bedrooms.
- ❖ Master suite includes two offices and separate bath facilities.
- ❖ Amenities include heated indoor pool with spa and BBQ; doubles tennis court; outdoor fire pit; and 3-hole championship golf course with putting green.
- ❖ Closets are replaced with wardrobes.
- ❖ Solar field for full electric service and 24 hours power off grid capabilities.
- ❖ State of the art smart house
- ❖ Landscape architect designed gardens and landscaping
- ❖ Optional separate staff quarters.
- ❖ Fully customizable to fit clients needs and desires.

Maison Vino





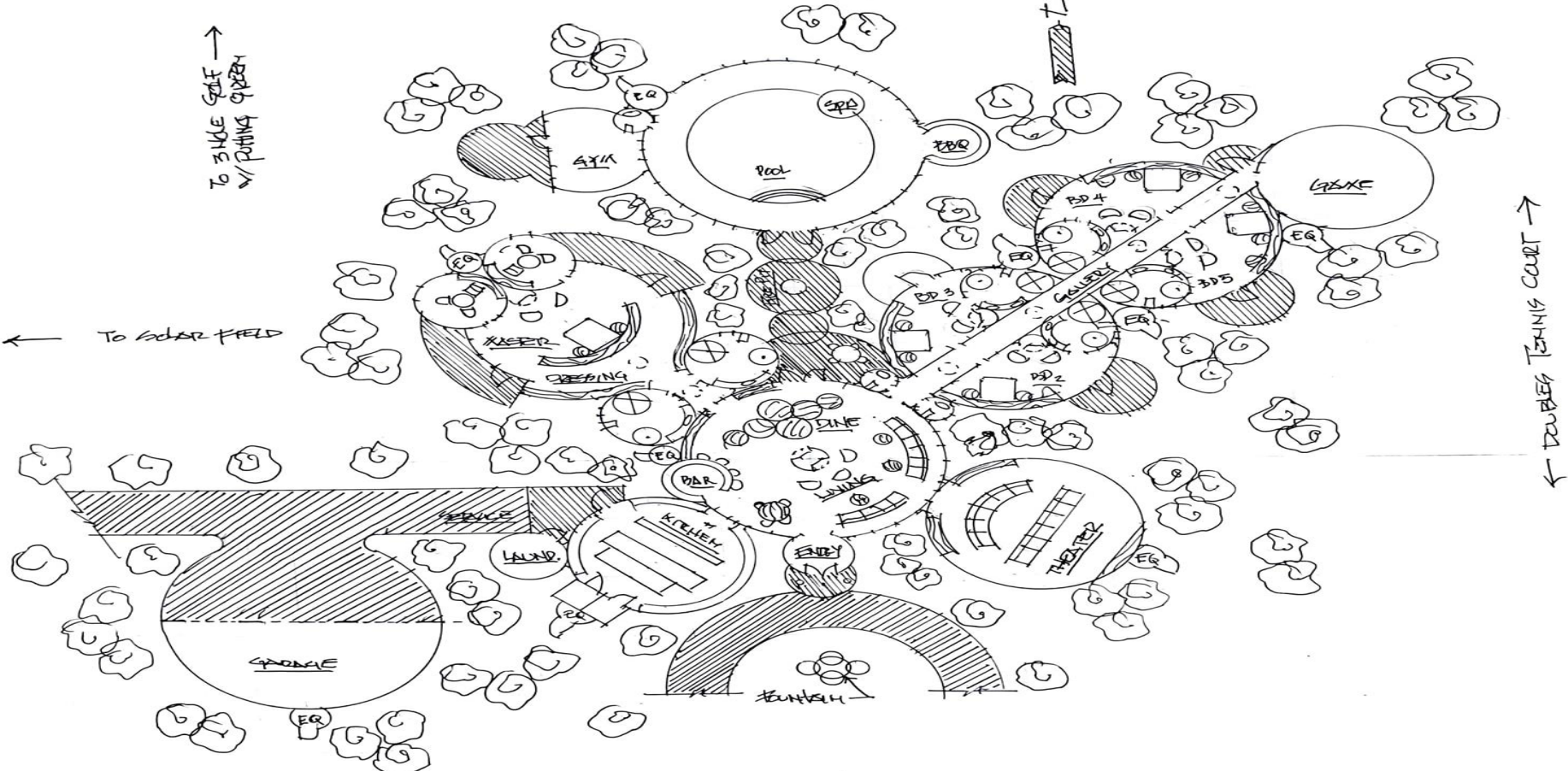
Villa Masion



Villa Maison 17,200 square feet

- ❖ A one-story contemporary estate residence with master suite and 4 bedroom/baths suites; entertainment great room (banquet dining for 24-28, bar with wine storage); large screen home theater with surround sound; gym; chief commercial kitchen; laundry; 3 car garage; and game room.
- ❖ Fully furnished with client approved contemporary and custom furniture and artwork.
- ❖ Baths with heated floors, Wi-Fi throughout, wood burning two-sided fireplace in great room and gas fired or wood burning fireplaces in all bedrooms.
- ❖ Master suite includes two offices and separate bath facilities.
- ❖ Amenities include heated indoor pool with spa and BBQ; doubles tennis court; outdoor fire pit; and 3-hole championship golf course with putting green.
- ❖ Closets are replaced with wardrobes.
- ❖ Solar field for full electric service and 24 hours power off grid capabilities.
- ❖ State of the art smart house
- ❖ Landscape architect designed gardens and landscaping
- ❖ Optional separate staff quarters.
- ❖ Fully customizable to fit clients needs and desires.

Villa Maison



TO SINGLE GOLF →
PUTTING GREEN

← TO SOLAR FIELD

← DOUBLES TENNIS COURT →

VILLA MAISON

17,200 sq. ft.